

Step 1. Attach lower column to base using two **short** knobs. Install gusset caps.



Step 2. Attach counter legs base using 2 **long** knobs per leg.



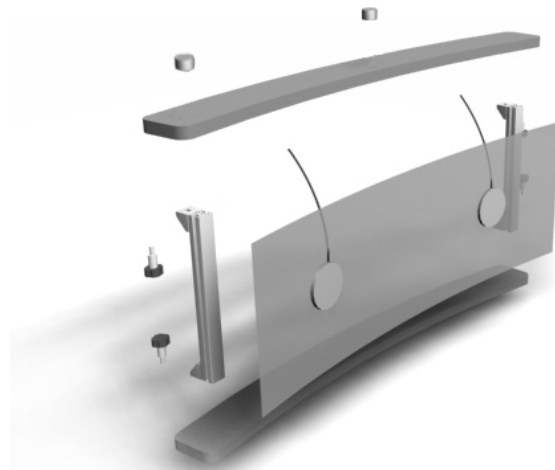
Step 3. Attach counter to lower column using 1 **long** knob. Attach counter legs to counter using 2 **long** knobs per leg.



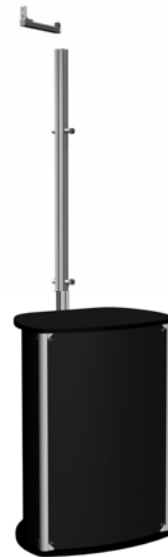
Step 4. Insert infill panels.



Step 5. Assemble canopy using two **long** knobs per extrusion. Install plex and lights. Attach standoffs.



Step 6. Attach upper column to lower column; tighten two **short** knobs. Slide on canopy support; tighten **short** knob.



Step 7. Attach canopy to support using one **long** knobs.

