

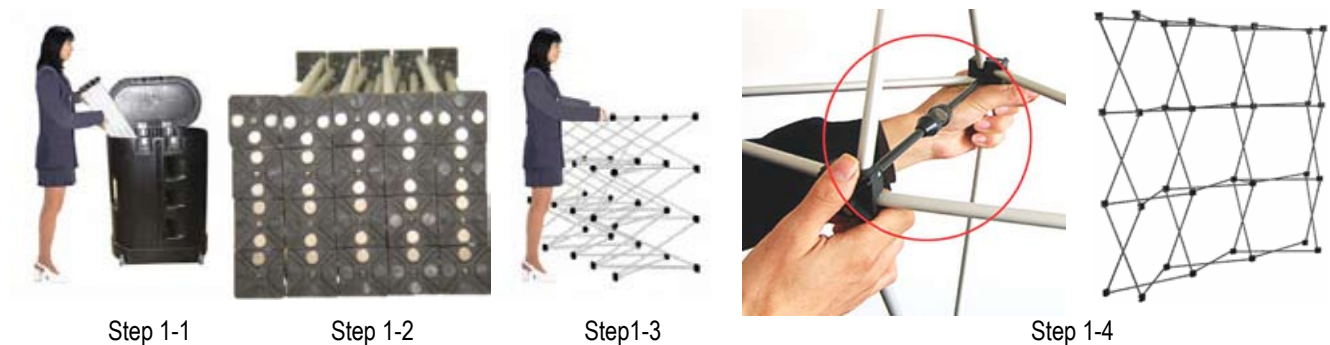
Pop-up Display User Instructions

Important Tips:

- Do not roll the panels too tight or with the fabric/graphic inside. Doing so can damage your panels and void the warranty.
- Remove ALL channel bars and lights before attempting to collapse the frame. Failure to do so can cause permanent damage to the frame and the channel bars.
- Use proper packing materials between the frame and the lid to avoid damaging to the inner cover of the lid during shipping.

Step 1. Set up the Frame:

1. Remove frame from the case
2. Position it such that the hubs with three magnets are in front of you and at the top.
3. Grasp frame to lift and expand.
4. When the frame is fully expanded, lock each of the magnetic locking bars by connecting them magnetically.



Step 2. Attach Channel Bars:

1. Remove channel bars from the case
2. Attach them to all quadrants on the front side of the frame and to both ends on the back side of the frame.



Step 3. Install Halogen Lights:

1. Remove the two halogen lights that are stored inside the lid of the case (for oval case only).
2. Slide the adapter onto the light and attach the electrical cord to the fixture.
3. Attach the assembled lights to the frame (cord not shown in the illustration).
4. Control lights with on/off switch on the light.

Pop-up Display User Instructions

Step 4. Attach the Panels

1. Remove the panels from the case, and unroll them on a clean flat surface.
2. Grasp a panel on its edges making sure the magnets are on top. Hold the panel slightly concave to give it rigidity to reach the top.
3. Starting from the center panels (these are wider than the end panels) and work outward. Attach each of the panel magnetically to the top hub then to the channel bars. Make sure that the magnetic strips are properly aligned.
4. Repeat with the end panels to wrap around both ends of the frame. Attach to the top hub then smooth both the front and rear downward at the same.
5. After all panels have been mounted, check for alignment and adjust if necessary.



Step 4



Step 5

Step 5. Attach the Case-to-Counter Conversion Panel

1. Remove the case-to-counter conversion panel from the case (for oval case only).
2. Starting at the back of the case, attach magnetic strips on the panel to metal strips on the back and front of the case.
3. Secure the conversion panel with the Velcro strip

Disassemble and Repackage

1. Detach the panels by starting at the bottom and peeling upward.
2. Roll each panel separately with fabric/graphic side out.
3. Remove all channel bars and lights.
4. Collapse the frame by detaching the magnetic locking bars.
5. Place all components back into the original storage space in the case

